

NORTHWOOD COMMUNITY PROFILE

SRPC <sup>FISCAL
YEAR</sup> '26
DATA SNAPSHOT

ACCEPTED:

STRAFFORD
Regional Planning Commission

SRPC Regional Data Snapshot

This document is a component of the SRPC Regional Data Snapshot.

SRPC conducts region-wide analysis of a number of data metrics each year for different projects and plans. The Regional Data Snapshot has been published annually since 2021 in April of each year. The Regional Data Snapshot covers demographics, economic vitality, livability and quality of life, mobility and accessibility, and resiliency.

The Data Snapshot Community Profiles are a complimentary series of documents that summarize the data found in the Regional Data Snapshot at the municipal level. These documents are prepared for each of the municipalities in the region and by chapter of the Regional Data Snapshot.

The Regional Data Snapshot and all of the Data Snapshot Community Profile documents can be found on the SRPC website at <http://straffordrpcnh.gov/measure/data-snapshot>.

Included Documents



Regional Data Snapshot



Community Profiles by Topic



Community Profiles by Municipality

Staff



Rachel Dewey



Mark Davie



Stephen Geis

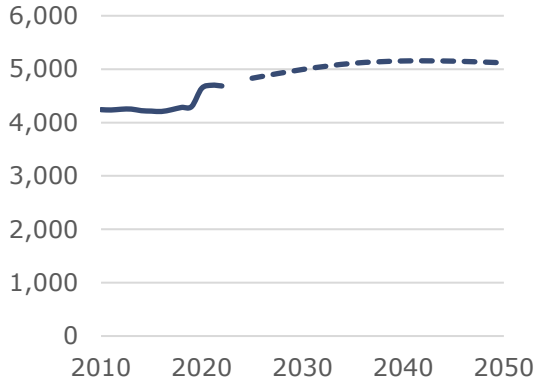


Brian Notinger

Community Profile

Demographics: Northwood, Rockingham County

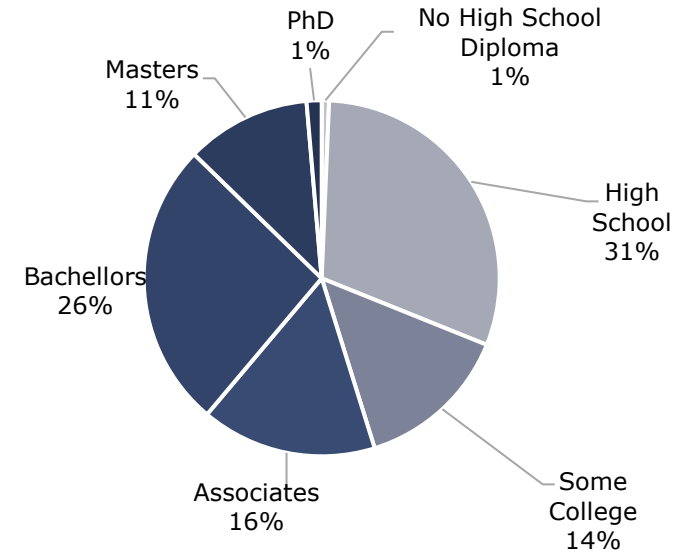
Population Trends and Projections



Population by Sex



Educational Attainment of Adults



Population by Race

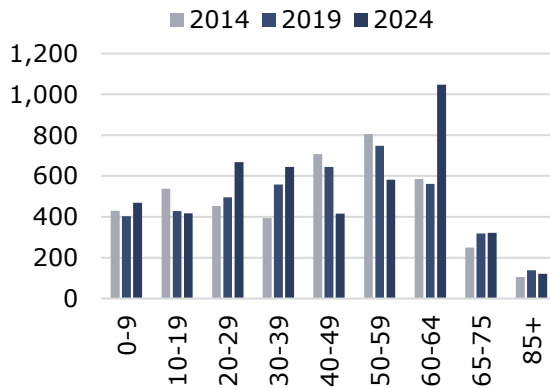
	2014	2019	2024
Non-Hispanic White	93.6%	93.5%	91.2%
Black	0.0%	1.2%	0.3%
Native American	0.0%	0.0%	0.1%
Asian	1.5%	0.5%	0.7%
Pacific Islander	0.0%	0.0%	0.0%
Other	0.0%	0.0%	0.0%
Two Or More	2.2%	1.0%	3.5%
Hispanic	2.8%	3.8%	4.2%

Population over 25: 3,585

Public School Enrollment

Year	Kind.	Elem.	Mid.	High	Total
'14/'15	42	210	165	243	660
'15/'16	31	224	151	232	638
'16/'17	34	212	135	248	629
'17/'18	41	217	134	250	642
'18/'19	41	210	127	244	622
'19/'20	34	227	141	212	614
'20/'21	26	195	137	190	548
'21/'22	40	180	133	197	550
'22/'23	37	192	138	186	553
'23/'24	40	202	129	194	565

Population by Age



Sources of Population Change

Births	412
- Deaths	-296
+ Migration	284
Total Change (2010-2019)	400

Population with a Disability¹

	2014	2019	2024
With a Disability	322	531	533

¹ People who reported having a disability when responding to the ACS.

Veterans

	2014	2019	2024
Veterans	436	465	406

Median Age

2014	43.3
2019	44.2
2024	42.4

Life Expectancy

Life Expectancy	78.6
Under 18	18.0%
Over 65	21.5%

Data Sources: US Census Bureau ACS, NH BEA OPD, NH Department of Education, CDC, NH Secretary of State Vital Statistics

Learn more at <https://tinyurl.com/DataSnapshot2025>

Community Profile

Economic Vitality: Northwood, Rockingham County

Employment

Employment Projections	2015	2025	2035	2045
	1,055	1,123	1,198	1,281

Labor Force Efficiency



- Lives here, Works elsewhere
- Lives here and Works here
- Lives elsewhere, Works here

	Lives Here Works	Here Away	Here Here	Away Here
Total	1,992	259	997	
Worker Age	Under 25	362	68	309
	30 - 54	1,057	106	465
	Over 55	573	85	223
Monthly Income	< \$1,250	282	69	249
	\$1,250 - \$3,333	345	72	219
	> \$3,333	1,365	118	529
Sector	Producing	316	41	128
	Trade, Transportation, and Utilities	413	36	301
	All others	1,263	182	568

Labor Force



Month	Labor Force	Employed	Unemployment Rate
Jan. 2020	2,555	2,479	3.0%
Apr. 2020	2,419	2,019	16.5%
Apr. 2021	2,466	2,377	3.6%
Apr. 2022	2,471	2,422	2.0%
Apr. 2023	2,486	2,431	2.2%
Jan. 2024	2,506	2,460	1.8%

Recovery from Initial COVID Disruptions to Labor Force

As of January 2026, the Civilian Labor Force **has not recovered** and the Unemployment rate **has recovered** to pre-COVID trends. ("Recovered" indicates that each month from Oct. '25 to Jan. '26 was better than the same period in '19-'20)

Household Incomes

	Median	All	Owners	Renters
2014	\$71,379	\$81,111	\$51,250	
2019	\$91,411	\$98,875	\$50,341	
2024	\$129,375	\$135,324	\$71,625	

Income	All	Owners	Renters
Households	1,776	1,581	195
<\$10K	3.0%	3.2%	4.6%
\$10-15K	1.2%	0.6%	6.7%
\$15-25K	1.1%	0.9%	3.6%
\$25-35K	3.7%	4.6%	0.0%
\$35-50K	3.8%	3.9%	6.7%
\$50-75K	11.0%	9.9%	30.3%
\$75-100K	8.7%	7.8%	24.1%
\$100-150K	33.3%	38.3%	24.1%
> \$150K	24.9%	30.9%	0.0%

Poverty and Income Inequality

Population in households...

Under 100% of Poverty Level	348
Under 200% of Poverty Level	732

Households with incomes...

Less than full time Min. Wage (\$15,080 per year)	4.2%
Less than the Living Wage for 1 Adult: \$57,158 for Rockingham County*	12.8%

* Rounding down to income bracket in table

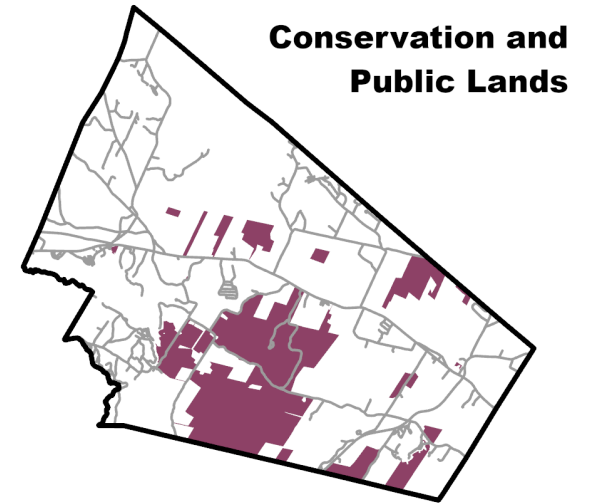
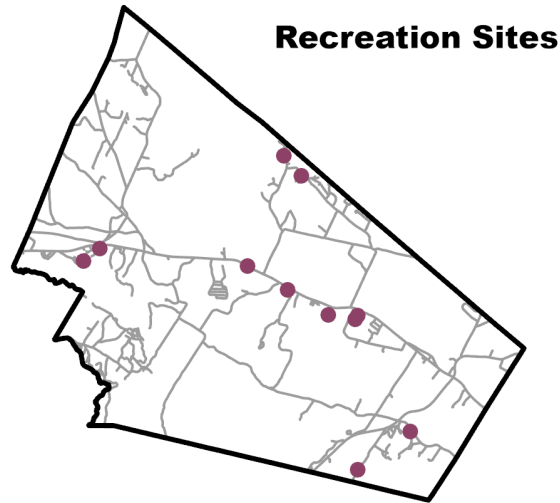
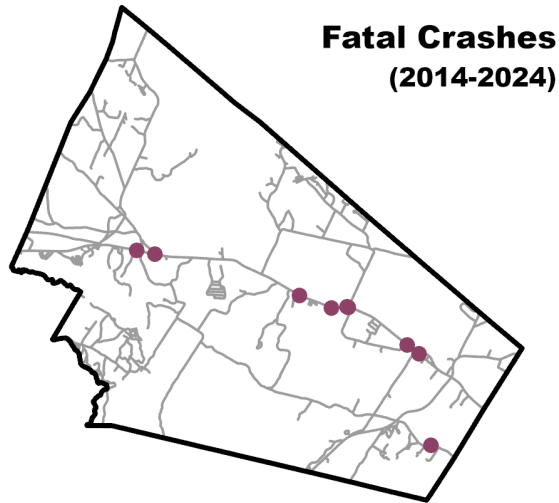
Gini Index	0.31
-------------------	------

Data Sources: US Census Bureau ACS and LEHD, MIT Living Wage Calculator, NHES LAUS

Learn more at <https://tinyurl.com/DataSnapshot2025>

Community Profile

Livability and Quality of Life: Northwood, Rockingham County



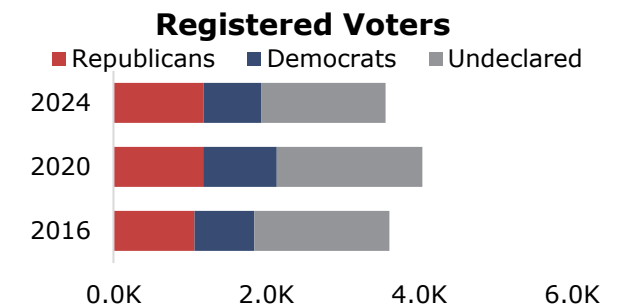
Square Miles: 4.91

Percent of Total Land: 16%

Year	Fatalities	Serious Injuries
2014	1	0
2015	0	0
2016	0	1
2017	1	1
2018	2	1
2019	2	1
2020	0	2
2021	1	2
2022	0	6
2023	1	2
2024	1	2
Total	9	18

Recreation Site Type	Count
Playgrounds	1
Parks	0
Trails/open land	2
Sports	3
Beaches/pools	4
Boat launch/etc.	1
Winter	0
Other	0
Total	11

Civic Participation



Participation in past elections

Year	Registered	Ballots Cast	Rate
2020	4,043	2,903	72%
2024	3,560	2,973	84%

Data Sources: USDOT NHTSA FARS, NHDOS, SRPC POP!, GRANIT, NHSOS.

Learn more at <https://tinyurl.com/DataSnapshot2025>

Community Profile

Housing: Northwood, Rockingham County

Housing Stock

Occupancy	2014	2019	2024
Total	2,106	2,164	2,263
Occupied	1,676	1,611	1,776
Vacant	430	553	487

Residential Building Permits

Permit Type	2000-09	2010-19	2020-22
Single Family	320	125	37
Multi-Family	57	0	0
Mobile Home	52	11	7
Other	6	0	0
Total	435	136	44

Stock by Age

	All	Owner	Renter
Before 1940	453	380	73
1940-1979	377	354	23
1980-1999	341	315	26
2000-2009	383	310	73
After 2010	222	222	0

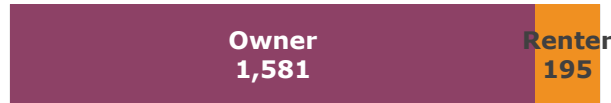
Units In Structure

Units	Count
1	2,181
2	49
3-9	17
10-50	16
>50	0

Bedrooms in Unit

Bedrooms	Count
0	47
1	101
2	699
3	1,142
4+	274

Household Tenure



Average Household Size

	2014	2019	2024
All	2.55	2.67	2.64
Owner	2.6	2.72	2.7
Renter	2.22	2.13	2.12

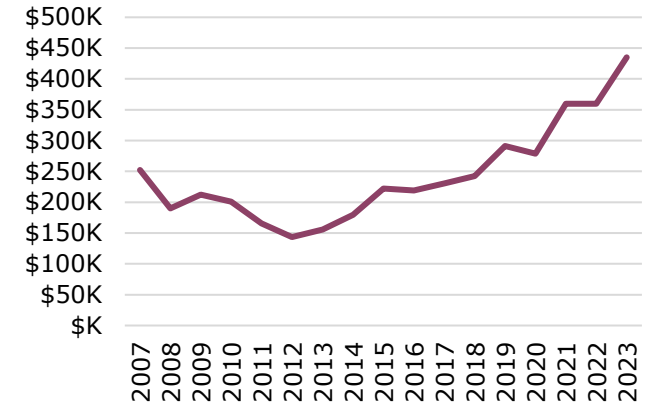
Household Size and Type

Size	2014	2019	2024
1	260	289	151
2	794	742	979
3	283	189	341
4	207	188	188
5+	132	203	117
Family	1,279	1,170	1,438
Married Couple	1,096	1,031	1,152
Other	183	139	286
Non-Family	397	441	338
Live Alone	260	289	151
Not Alone	137	152	187

Property Tax Rates

	2010	2020	2025
Rate per \$1,000	\$24.56	\$17.77	\$11.91

Median Sales Price



In 2025 the median purchase price was \$435,000 and a 10% down payment was \$43,500. The monthly payment for a home of this price would be \$3,705.

Zillow Observed Rent Index

Location	2024	2025
Dover	\$2,091	\$2,206
Rochester	\$1,999	\$2,057
Portsmouth	\$2,575	\$2,723
Concord	\$1,764	\$1,804
Kittery, ME	\$2,604	\$2,775

Housing Market Status

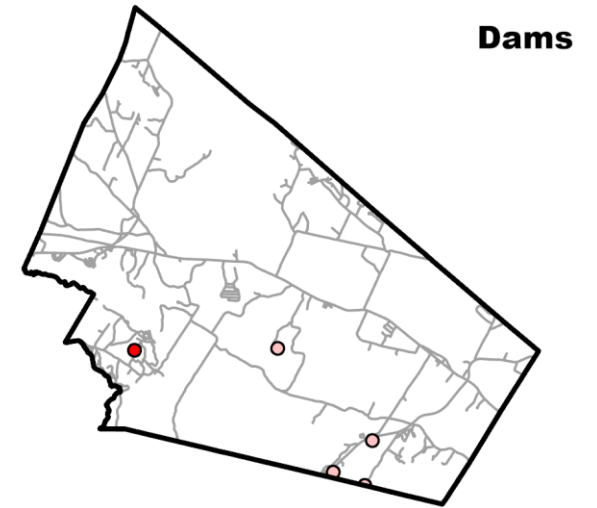
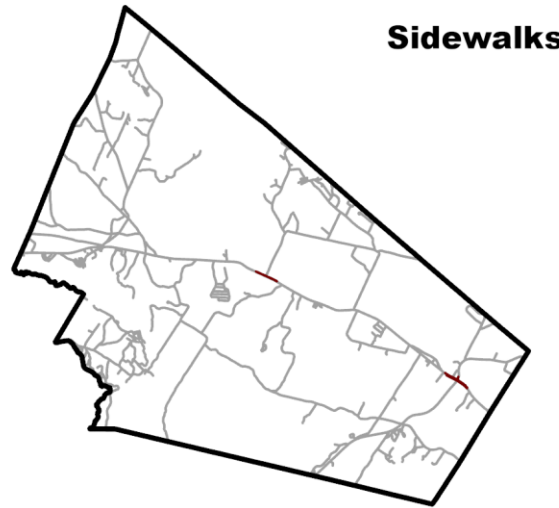
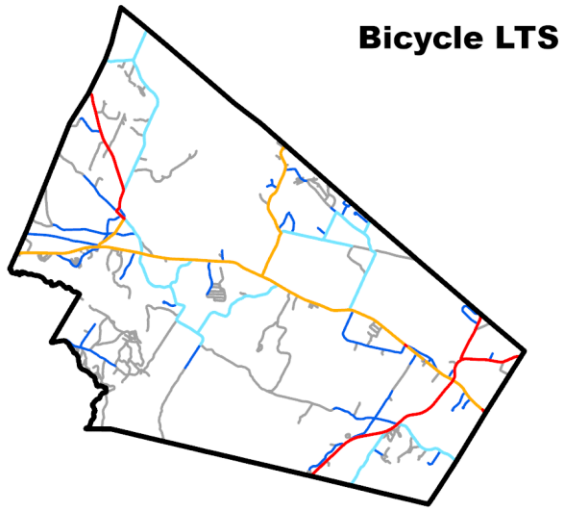
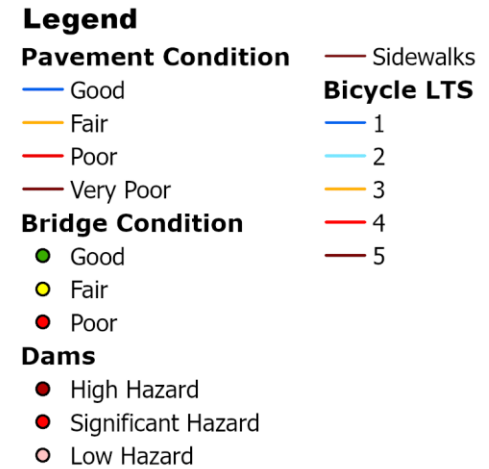
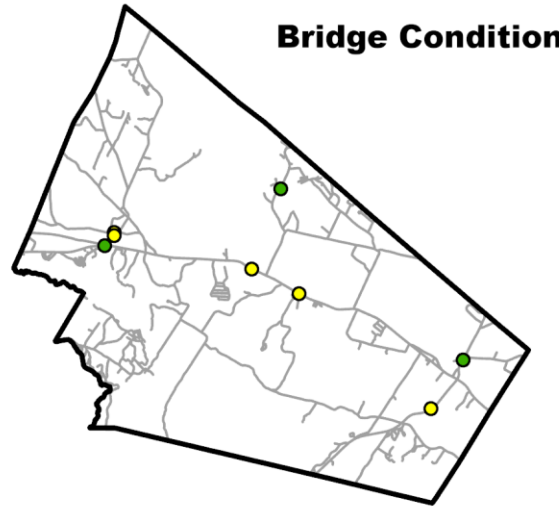
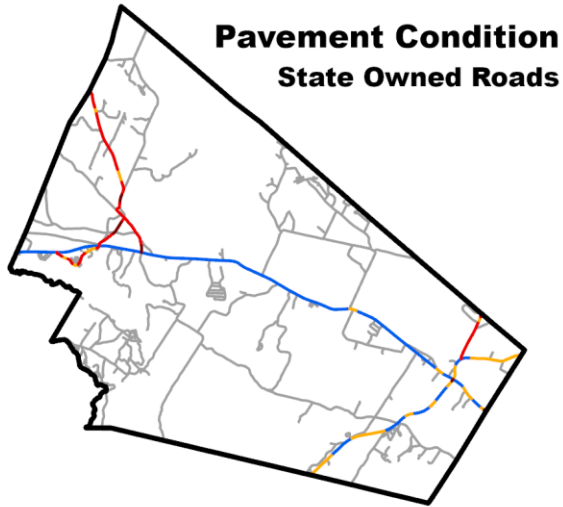
Single Family Home Sales 2024	
Closed Sales	75 total in 2025
Days on Market	Min. 6 in 2025
Months Supply	Min. 1.8 in 2025 (Jan)

Data Sources: US Census Bureau ACS, SRPC Building Permit Database, NH Public Finance Consortium, NH Association of Realtors, Zillow

Learn more at <https://tinyurl.com/DataSnapshot2025>

Community Profile

Mobility and Accessibility: Northwood, Rockingham County



Served by...	
Amtrak	No
COAST	No
Wildcat	No
ACT Providers	Yes

Legislative Class of Roads	
1-4 (State and Federal)	49.53
5 (Local)	32.17
6 (Unmaintained)	8.22
Total	89.92

Bike and Pedestrian Infrastructure Miles	
Low BLTS (1-2)	31.50
High BLTS (3-5)	17.37
Sidewalks	0.00

Bridges and Dams	
Total Bridges	1
Red List Bridges	0
Total Dams	17
High Hazard Dams	0

Data Sources: NHDOT, NHDES, Amtrak, COAST, UNH, SRPC BLTS, SRPC Sidewalks

Learn more at <https://tinyurl.com/DataSnapshot2025>

Community Profile

Resiliency: Northwood, Rockingham County

Contamination Sites

Open Remediation	36
Closed Remediation	58
Total Sites	94

Hazard Mitigation Plans

Status	Active
Expiration Date	06/26/30

USDA Plant Hardiness

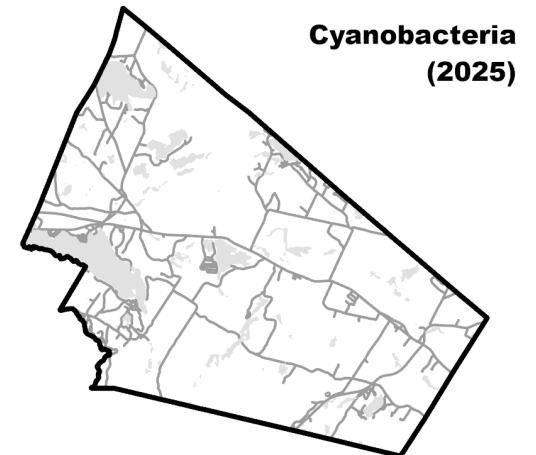
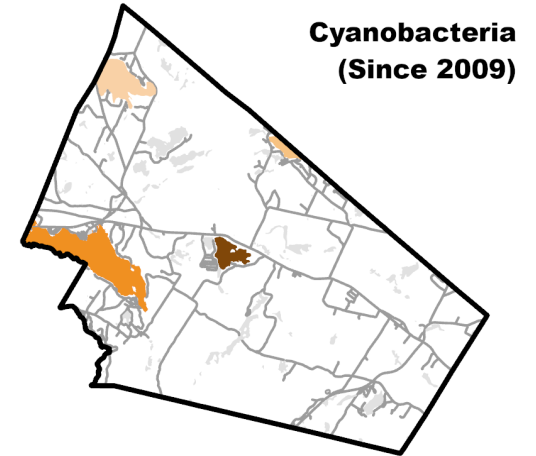
Zones in 2012	Mostly 5B, Some 5A
Average Extreme Min. Temp. Tolerated	-15 to -10

Zones in 2023	Mostly 6A, Some 5B
Average Extreme Min. Temp. Tolerated	-10 to -5

FEMA Risk Ratings

Risk Type	Rating (Summary of Census Tracts)
Coastal Flooding	No Rating
Riverine Flooding	Relatively Moderate
Cold Wave	Relatively Low
Heat Wave	Relatively Low
Tornado	Relatively Low
Hurricane & Tropical Storms	Relatively Low
Hail	Relatively Low
Landslide	Relatively Low
Ice Storm	Relatively High
Winter Weather	Relatively Moderate
Drought	No Rating
Wildfire	Very Low
Lightning	Relatively Moderate
Strong Winds	Relatively Moderate

Cyanobacteria Alert Days



Legend

Cyanobacteria (Since 2009)	Cyanobacteria (2025)
0	0 Days
1-24 Days	1-24 Days
50-99 Days	25-49 Days
25-49 Days	> 50 Days
100-199 Days	
> 200 Days	

Data Sources: NHDES, USDA, FEMA

Learn more at <https://tinyurl.com/DataSnapshot2025>

Data Sources

State Data

New Hampshire Department of Education. Town Enrollment Breakdown (October 2025). 2015-2025.

<https://my.doe.nh.gov/iPlatform/Report/DataReportsSubCategory?reportSubCategoryId=10>

New Hampshire Department of Environmental Services.

- Dams Inventory. 2025. SRPC. <https://granit.unh.edu/>
- Contaminated Sites. 2025. SRPC. <https://www.des.nh.gov/waste/contaminated-sites>
- Cyanobacteria Data. 2025. SRPC. Requested by SRPC
- Living Shorelines. 2022. New Hampshire. <https://www.nhcaw.org/greatbaylivingshorelineproject/>
- Designated Rivers, 2022. <https://www.arcgis.com/home/item.html?id=efcde572667546b498147a2a1c49cbf2>
- Wellhead Protection Areas, 2025. <https://nh-department-of-environmental-services-open-data-nhdes.hub.arcgis.com/datasets/NHDES::wellhead-protection-areas-2/about>
- Rivers and Streams Protected Under the Shoreland Protection Act, 2024. <https://nhdes.maps.arcgis.com/apps/webappviewer/index.html?id=7fc502c48d2248d7aa05ffd03ff6636c%20>

New Hampshire Department of Health and Human Services. Hospital Capacities. 2024. SRPC. Available to SRPC directly from NHDHHS

New Hampshire Department of Revenue Administration

- Meals & Rooms Tax Data. 1974-2025. [https://www.nheconomy.com/office-of-planning-and-development/what-we-do/state-data-center-\(census-data\)/economic-data](https://www.nheconomy.com/office-of-planning-and-development/what-we-do/state-data-center-(census-data)/economic-data)
- Municipal and Village Property Tax Rates. 2023-2025. <https://www.revenue.nh.gov/about-dra/municipal-and-property-division/municipal-and-property-reports/municipal-and-village>

New Hampshire Department of Transportation

- NH State Crash Database. 2012-2024. Available to SRPC through an agreement with NHDOT.
- Pavement Conditions. 2016-2024. Available to SRPC by request with NHDOT.
- Quarterly GIS Data Snapshot. February 2026. Statewide. Available from <https://ftp.granit.unh.edu/NHDOT/GIS%20Data%20Quarterly%20Snapshots/>

New Hampshire Employment Security

- Short Term Employment Projections. 2020-2030. Municipalities. <https://www.nhes.nh.gov/elmi/products/proj.htm>
- Employment Estimates. 2015. SRPC. Available to SRPC through an agreement with NHES
- Local Area Unemployment Statistics. New Hampshire Employment Security. 1991-2025. Counties, NH. <https://www.nhes.nh.gov/elmi/statistics/laus-arch.htm>

New Hampshire GRANIT GIS Clearinghouse

- National Hydrography Dataset Plus, 2024. <https://new-hampshire-geodata-portal-1-nhgranit.hub.arcgis.com/datasets/NHGRANIT::new-hampshire-stream-order-dataset/about>

- Statewide Aquifer Transmissivity For New Hampshire, 2020. <https://nh-granit-nhgranit.hub.arcgis.com/datasets/NHGRANIT::statewide-aquifer-transmissivity-for-new-hampshire/about>
- NH Watershed Boundaries (HUC12), 2019. <https://new-hampshire-geodata-portal-1-nhgranit.hub.arcgis.com/datasets/NHGRANIT::nh-watershed-boundaries-huc12/about>
- Coastal Conservation Focus Areas, 2021. <https://new-hampshire-geodata-portal-1-nhgranit.hub.arcgis.com/datasets/NHGRANIT::coastal-conservation-focus-areas-2021/about>

New Hampshire Office of Planning and Development data available from

[https://www.nheconomy.com/office-of-planning-and-development/what-we-offer/state-data-center-\(census-data\)](https://www.nheconomy.com/office-of-planning-and-development/what-we-offer/state-data-center-(census-data))

- County Population Projections, By Municipality. 2025-2050. Municipality.
- Population Estimates for New Hampshire Cities and Towns. 2011-2025. Municipality.

New Hampshire Secretary of State.

- Vital Statistics. 2010-2019. SRPC. Available to SRPC directly from NHSOS.
- Voting data. 2016-2024. <https://www.sos.nh.gov/elections>

National Data

Census Bureau

- Poverty Thresholds. 2024. US. <https://www.census.gov/data/tables/time-series/demo/income-poverty/historical-poverty-thresholds.html>
- American Community Survey 5-Year Estimates (Tables B01001, B01002, B03002, B08201, B15003, B17021, B18101, B19083, B25010, B25044, C16002, C17002, S1901) 2014, 2019, 2024. Tract, County Subdivision, County, NH. <https://data.census.gov/cedsci>
- Decennial Census. 2010. Blocks. <https://www.census.gov/geographies/mapping-files/time-series/geo/tiger-line-file.2010.html>
- Decennial Census. 2020. Blocks. <https://www.census.gov/geographies/mapping-files/time-series/geo/tiger-line-file.2020.html>

Census Bureau Center for Economic Studies

- Longitudinal Employer-Household Dynamics - Residence Area Characteristics. 2023. Blocks. <https://lehd.ces.census.gov/data/>
- Longitudinal Employer-Household Dynamics - Workplace Area Characteristics. US Census Bureau Center for Economic Studies. 2023. Blocks. <https://lehd.ces.census.gov/data/>
- Longitudinal Employer-Household Dynamics – Origin/Destination. US Census Bureau Center for Economic Studies. 2023. Blocks. <https://lehd.ces.census.gov/data/>
- Quarterly Workforce Indicators. 2015-2025. <https://lehd.ces.census.gov/data/>

Center for Disease Control

- National Vital Statistics System. Life Expectancy at Birth. 2000-2023. <https://www.cdc.gov/nchs/nvss/life-expectancy.htm>
- Arias E, Escobedo LA, Kennedy J, Fu C, Cisewski J. U.S. Small-area Life Expectancy Estimates Project: Methodology and Results Summary [PDF – 8 MB]. National Center for Health Statistics. Vital Health Stat 2(181). 2018. <https://www.cdc.gov/nchs/nvss/usaleep/usaleep.html>

Department of Energy. Alternative Fuel Data Center. 2025. SRPC. <https://afdc.energy.gov/>

Federal Emergency Management Agency. Hazard Risk Maps. 2025. SRPC.

<https://hazards.fema.gov/nri/map>

Federal Highway Administration

- Freight Analysis Framework. 2021-2024, 2030-50. Statewide. <https://faf.ornl.gov/faf5/Default.aspx>
- National Bridge Inventory. 2016-2025. Statewide. Available from <https://www.fhwa.dot.gov/bridge/nbi.cfm>

Federal Reserve Bank of New York. Survey of Consumer Expectations. 2013-2026.

<https://www.newyorkfed.org/microeconomics/sce#/>

Federal Reserve Economic Data (FRED) – St. Louis Fed.

- All Marginally Attached Workers for New Hampshire. 2015-2025. <https://fred.stlouisfed.org/series/ALLMARGATNH>
- Federal Interest Rates. 1954-2025. United States.
- Freddie Mac, 30-Year Fixed Rate Mortgage Average in the United States [MORTGAGE30US], retrieved from FRED, Federal Reserve Bank of St. Louis; <https://fred.stlouisfed.org/series/MORTGAGE30US>.
- U.S. Bureau of Economic Analysis, Per Capita Personal Income in Strafford County, NH [PCPI33017], retrieved from FRED, Federal Reserve Bank of St. Louis; <https://fred.stlouisfed.org/series/PCPI33017>.

Federal Transit Administration. National Transit Database. 2010-2024.

- Complete Monthly Ridership (2026). 2010-2025. <https://www.transit.dot.gov/ntd/data-product/monthly-module-adjusted-data-release>
- 2025 Annual Database Service Vehicle Inventory. <https://www.transit.dot.gov/ntd/data-product/2025-annual-database-service-vehicle-inventory>
- 2025 Annual Database Facility Inventory. <https://www.transit.dot.gov/ntd/data-product/2025-annual-database-facility-inventory>
- 2025 Vehicles. <https://www.transit.dot.gov/ntd/data-product/2025-vehicles>

National Highway Transportation Safety Administration. Fatality Analysis Reporting System.

2012-2024. SRPC. <https://www.nhtsa.gov/>

National Oceanic and Atmospheric Administration

- Monthly Maximum Snow Totals. 1999-2025. Town of Durham. City of Concord. <https://www.weather.gov/wrh/Climate?wfo=gyx>
- United States Billion-dollar Disaster Events. 1980-2024. United States. <https://www.ncei.noaa.gov/access/billions/>

Social Security Administration

- Old Age, Survivors, and Disability Insurance Beneficiaries by State and ZIP code (released December 2025). 2019-2025. https://www.ssa.gov/policy/docs/statcomps/oasdi_zip/index.html
- Social Security Insurance Monthly Statistics (released January 2026). 2018-2025. https://www.ssa.gov/policy/docs/statcomps/ssi_monthly/2025-12/index.html

United States Department of Agriculture. Plant Hardiness Zone Maps. 2012-2023. United States. <https://planthardiness.ars.usda.gov/pages/map-downloads>

United States Energy Information Administration (EIA). Renewable Energy. 2025. New Hampshire. <https://www.eia.gov/state/?sid=NH>

US Small Business Administration. 7(a) & 504 FOIA Reports. 2020-2026.

<https://data.sba.gov/en/dataset/7-a-504-foia>

Other Data

State of Connecticut. State of Connecticut - Minimum Wage Information.

<https://www1.ctdol.state.ct.us/lmi/ctminimumwage.asp>.

Maine Department of Labor. Title 26 Labor & Industry § 664 Minimum wage (2026).

https://www.maine.gov/labor/labor_laws/minimumwagefaq/

Massachusetts General Law. MGL c.151 (2026) [https://www.mass.gov/info-](https://www.mass.gov/info-details/massachusetts-law-about-minimum-wage)

[details/massachusetts-law-about-minimum-wage](https://www.mass.gov/info-details/massachusetts-law-about-minimum-wage)

Rhode Island Department of Labor & Training. RI General Law §28-12 (2025)

<https://dlt.ri.gov/regulation-and-safety/labor-standards/minimum-wage>

Vermont Department of Labor. 21 V.S.A. §384 (2025) [https://labor.vermont.gov/rights-](https://labor.vermont.gov/rights-and-wages)

[and-wages](https://labor.vermont.gov/rights-and-wages)

Alliance for Community Transportation. Monthly Ridership Report (March 2026). 2019-2026.

ACT Service Area. Available from ACT by request.

Regional Integrated Transportation Information System. National Performance Management

Research Data Set. 2017-2025. Statewide. <https://nprds.ritis.org/analytics/>

Rail Passengers Association. Ridership Statistics. 2013-2025. Statewide.

<https://www.railpassengers.org/tools-info/ridership-statistics/>

Great American Stations (Amtrak). America's Stations. 2017-2025. National.

<https://www.greatamericanstations.com/stations/>

Northern New England Rail Passenger Rail Authority. Downeaster Monthly Ridership History.

2012-2025. <https://www.nnepra.com/reports-stats/reports/>

New Hampshire Northcoast. Data provided directly by staff.

Wake, C., Knott, J., Lippmann, T., Stampone, M., Ballestero, T., Bjerklie, D., Burakowski, E., Glidden, S., Hosseini-Shakib, I., Jacobs, J. (2019). New Hampshire Coastal Flood Risk

Summary – Part I: Science. Prepared for the New Hampshire Coastal Flood Risk Science

and Technical Advisory Panel. Report published by the University of New Hampshire,

Durham, NH. <https://www.des.nh.gov/about/boards-and-committees/coastal-flood-risk>

Stampone, M., Wake, C., Burakowski, E. (2021). New Hampshire Climate Assessment 2021.

Report published by the University of New Hampshire, Durham, NH.

<https://scholars.unh.edu/cji/viewcontent.cgi?article=1071&context=sustainability>

New Hampshire Association of Realtors. Public data viewer: [https://nhar-](https://nhar-public.stats.showingtime.com/reports)

[public.stats.showingtime.com/reports](https://nhar-public.stats.showingtime.com/reports)

- Month Supply Inventory. 2017-2025. New Hampshire.
- Single Family Homes Average Days on the Market. 2011-2025. Counties, NH.
- Single Family Closed Sales. 2017-2025. Counties, NH.
- Homes for Sale. 2005-2025. Strafford County.
- Percent of List Price Received Over Asking. 2017-2025. Strafford County.

Zillow Observed Rent Index. 2024-2026. <https://www.zillow.com/research/data/>

Data Collected by Strafford Regional Planning Commission

- Bicycle Level of Traffic Stress. 2019.
- Building Permit Data. 2008-2022.
- Pedestrian Level of Traffic Stress. 2025.
- Sidewalk Inventory. 2018-2022.
- SRPC SLR Database. SRPC. 2014. SRPC. Available from <https://tinyurl.com/9bhwyjx>
- SRPC Land Use Data. 2010, 2022.
- SRPC Shoreland Water Quality Protection Act Protected Areas. 2020.