

**Meeting of the Strafford RPC Commissioners & EDD Board of Directors**

Friday, June 19, 2026 9:00 – 10:30 AM

Hybrid Meeting (Conference Rm 1A, SRPC Office & via Zoom)

In accordance with RSA 91:A, the Commission requires an in-person quorum. So long as an in-person quorum, Commissioners may participate virtually. Guests may attend the meeting virtually or at the SRPC Office. All participants, both in-person and virtual, can communicate contemporaneously.

**Microsoft Teams Meeting**

**Join:** <https://teams.microsoft.com/meet/26158346669748?p=4xytesfYGFhcig30qO>

**Meeting ID:** 261 583 466 697 48

**Passcode:** fH7Va7Ph

These instructions have also been provided at [www.straffordrpcnh.gov](http://www.straffordrpcnh.gov). If anybody is unable to access the meeting, please email [mtaylorfetter@straffordrpcnh.gov](mailto:mtaylorfetter@straffordrpcnh.gov) or call 603-994-3500 (x115).

| <b>Agenda Item</b>  | <b>Time</b> | <b>Pre-Meeting Notes</b>             |
|---|-------------|--------------------------------------|
| 1) Introductions  | 9:00-9:05   |                                      |
| 2) Commissioner Roundtable  | 9:05-9:15   | Updates from your community          |
| 3) Approval of the May 15, 2026 Minutes   | 9:15-9:20   | enclosed                             |
| 4) Five Year Comprehensive Economic Development Strategy<br>a) Public Hearing<br>b) Vote to Adopt   | 9:20-9:40   | <a href="#">Link</a> , Refer to memo |
| 5) Annual Meeting Business Items<br>a) FY 2027 Budget Presentation and Adoption<br>b) Elect FY 2027 Officers and Executive Committee<br>c) FY 2027 Meeting Schedule | 9:40-10:20  | Refer to memo and enclosures         |
| 6) Other Business   | 10:20-10:25 |                                      |
| 7) Citizens Forum   | 10:25-10:30 |                                      |
| 8) Adjourn  | 10:30       |                                      |

Reasonable accommodations for people with disabilities are available upon request. Include a detailed description of the accommodation you will need along with your contact info. Please make your request as early as possible; allowing at least 5 days advance notice. Last minute requests will be accepted but may be impossible to fill. Please call (603) 994-3500 or email [srpc@straffordrpcnh.gov](mailto:srpc@straffordrpcnh.gov).

**STRAFFORD REGIONAL PLANNING COMMISSION**

150 Wakefield Street, Suite 12, Rochester, New Hampshire 03867

Barrington | Brookfield | Dover | Durham | Farmington | Lee | Madbury | Middleton | Milton | New Durham  
 Newmarket | Northwood | Nottingham | Rochester | Rollinsford | Somersworth | Strafford | Wakefield



## **RULES OF PROCEDURE**

*Strafford Regional Planning Commission  
Strafford Metropolitan Planning Organization, and  
Strafford Economic Development District*

### **Meeting Etiquette**

Be present at the scheduled start of the meeting.

Be respectful of the views of others.

Ensure that only one person talks at a time. Raising your hand to be recognized by the chair or facilitator is good practice.

Do not interrupt others or start talking before someone finishes.

Do not engage in cross talk.

Avoid individual discussions in small groups during the meeting. When one person speaks, others should listen.

Active participation is encouraged from all members.

When speaking, participants should adhere to topics of discussion directly related to agenda items.

When speaking, individuals should be brief and concise when speaking.

The Strafford Regional Planning Commission & Metropolitan Planning Organization holds both public meetings and public hearings.

For public meetings, guests are welcome to observe, but should follow proper meeting etiquette allowing the meeting to proceed uninterrupted. Members of the public who wish to be involved and heard should use venues such as Citizen Forum, Public Hearings, Public Comment Periods, outreach events, seminars, workshops, listening sessions, etc.



**DATE:** June 19, 2026

**TO:** SRPC Commissioners and Economic Development District Board of Directors

**FROM:** Jen Czysz, Executive Director  
Natalie Gemma, Senior Regional Planner  
Michael Polizzotti, Senior Economic Development Planner

**RE: June 19, 2026, Agenda Items & Upcoming Meeting Schedule**

---

## 2026-2030 Draft CEDS Presentation

The public comment period for the Comprehensive Economic Development Strategy (CEDS) for 2026-2030 was open from May 8 to June 7, 2026. Feedback gathered during the 30-day public comment period has been compiled into a public comment log, included in the final draft.

Please review ahead of the public hearing and vote for adoption, which is scheduled for this June 19, 2026, Commission Meeting.

[https://docs.straftordrpcnh.gov/documents/plans/edd/ceds\\_2026.pdf](https://docs.straftordrpcnh.gov/documents/plans/edd/ceds_2026.pdf)

## Annual Business Meeting Items

### FY 2027 Budget

The final draft of the proposed FY2027 budget includes balanced revenues and expenses. There are only two lines on the revenue side that are speculative, conservatively so. These include recently submitted Coastal Resilience Grant applications (two) and PREPA grant application (four) and are assumed only one of each is funded. Revenue is slightly lower this year and it is likely that new opportunities will arise over the course of the fiscal year.

On the expense side, all staff are retained. Temporary part-time staff are extended into FY2027 at a reduced number of hours so to complete ongoing projects. Annual salary increases were set at a range of 1.5% to 3.0% depending on individual performance. Health insurance is one of our larger increases with a notable increase to the premiums this year. Additionally, our property and liability insurance also saw a significant increase after being stable for several years. The largest decrease among expenses is anticipated pass-through contractor costs with the retirement of several projects and progress made on others.

### Elect 2027 Officers

Refer to the enclosed memo with the slate of officers.

**See you June 25, 4:30-7:30 PM for the Annual Meeting at the Oaks Somersworth.**



## **MEETING OF THE SRPC EDD BOARD OF DIRECTORS**

Friday, May 15, 2026 9:00 – 10:30 AM

Hybrid Meeting (Conference Rm 1A, SRPC Office & via Zoom)

### **1) Introductions**

At 8:10AM, Chair Paul Rasmussen called the meeting to order and asked for introductions.

**Commissioners present:** Paul Rasmussen, Durham; Mark Richardson, Somersworth; Matt Towne, Barrington; Kate Buzard, Middleton; Mike Bobinsky, Somersworth; Sarah Wrightsman, Newmarket; Curtis Register, Durham; Lee Howlett, Milton; Rick Healy, Rochester; Don Manter, Northwood; Curtis Register, Durham; Matt Towne, Barrington; Steve Brown, Dover; Lindsey Williams, Dover; Lee Howlett, Milton; Katrin Kasper, Lee

**Staff:** Colin Lentz, Mike Polizzotti, Jen Czysz,

**Attendees on Zoom:** Ernie Creveling, Barrington; Kean McDermott, Dover

**Staff attending remotely:** Natalie Gemma, Lisa Murphy

### **2) Commissioner Roundtable**

M. Town shared that Barrington hosted an Energy Day featuring 3 houses that use solar power, one being his house.

C. Register shared that the work on the Mill Pond Dam will commence either June 1 or June 15 depending on the fish migration. It is a national historical site, and they will be conducting many environmental studies during the process.

S. Wrightsman shared that the Office of Planning and Development at BEA held their Spring Planning and Zoning Conference over the weekend. There were very few people in attendance because it was a Saturday virtual conference on Teams all day. All of the videos are now like up on their YouTube page.

P. Rasmussen shared that Durham Waste Management Committee has spent the past 5–7 years promoting composting through education, data collection, and community outreach. They are now looking to expand their efforts by partnering with other communities to build regional interest. They are seeking connections with groups interested in learning more and getting involved. He asked anyone interested to contact him.

M. Bobinsky shared that the City of Somersworth will transition to cart-based trash and recycling collection next year while keeping the pay-as-you-throw system to preserve revenue and encourage recycling. Officials say the change will improve efficiency and worker safety but will require planning for crowded neighborhoods and downtown areas.



Public education and outreach will happen throughout the year. Concerns were also raised about Waste Management's landfill potentially closing within 7–9 years.

M. Richardson spoke on the challenges and costs of the transportation side of trash removal.

M. Bobinsky shared that Somersworth Plaza is gaining new businesses, including an expanded Nostro martial arts gym, a physical therapy group, and possibly a restaurant and grocery store. Renovations and landscaping improvements are also underway.

K. Pimental shared that HUD is launching Opportunity Zones 2.0, allowing municipalities to seek new federally designated investment areas. Somersworth and Farmington may gain additional eligible census tracts, with the governor expected to nominate qualifying areas in July. Officials said the program is intended to encourage business investment and retention through capital gains tax incentives, and communities are being encouraged to explore participation and share experiences from the first round of Opportunity Zones.

L. Williams shared that Dover is advancing several major development projects, including a mixed-use project on Littleworth Road with housing and transportation planning, and the redevelopment of the former Liberty Mutual property. The city is also expanding public access at its waterfront redevelopment site by adding kayak rentals alongside new apartments, restaurants, and park space. Officials emphasized balancing higher-end development with community access to green space and the waterfront.

S. Brown shared that also in Dover, they are kicking off in Dover a resilience plan process and community engagement starts today. More updates to come.

### **3) Action Items**

#### **a. Minutes of April 17, 2026**

M. Bobinsky moved to accept the April 17, 2026 meeting minutes. With a second by S. Wrightsman and a unanimous vote in favor, the motion passed.

### **4) Discussion Items**

#### **a) CEDS Final Draft Presentation and start of Public Comment Period**

M. Polizzotti and Natalie Gemma shared an overview of the completely updated five-year Draft Comprehensive Economic Development Strategy (CEDS) for the SRPC region. The plan covers all 15 municipalities and includes new themes, priorities, and a regional vision. It brings together economic development partners from southeastern New Hampshire and southern Maine to support collaboration and regional projects.

The CEDS includes:

- An overview of regional economic conditions
- A SOAR analysis of strengths, opportunities, and goals
- A strategic vision and action plan
- A list of priority projects

- An evaluation framework and economic resilience discussion

Public feedback from regional events and a large survey helped shape the new five-year CEDS, along with updated regional data snapshots. The plan includes a formal vision statement focused on making the Strafford region a resilient, thriving place where residents can afford to live and businesses can grow.

The CEDS is organized around four main themes:

- Housing
- Business innovation and entrepreneurship
- Workforce, education, and childcare
- Community eligibility and capacity

Cross-cutting “lenses” throughout the plan include regional collaboration, resilience, quality of life, community identity, and age-friendliness for both older adults and younger families.

Public comments on the draft CEDS can be submitted by email to Mike or Natalie, with comments being collected in one place. The public comment period closes June 7, after which staff will compile and respond to all feedback. The final draft, including a public comment log and responses, will be distributed on June 12.

### **b) Executive Committee Slate of Officers**

J. Czynsz stated that each year at the June Annual Business Meeting we elect Commissioners to serve on the executive committee. There are 3 officers (chair, vice chair, and secretary/treasurer), 4 regular members, and 2 alternate members. Anyone interested in serving on the executive committee, or continuing to do so, was asked to reach out to Jen or Megan.

J. Czynsz reported that the next Commissioner meeting is scheduled for June 19, which is a holiday, but the meeting will go on as planned.

### **c) Grant Opportunities**

J. Czynsz stated there are several open grant opportunities for municipalities.

Recreational Trails, due May 29

Coastal Resilience Grants, due June 5

Piscataqua Region Environmental Planning Assessment Grants, due June 16

Project Builder Program, due July 1

Source Water Protection Grants (land protection), due May 28

Kean McDermott said the Seacoast Area Bicycle Riders group is willing to provide letters of support for grants involving bike or pedestrian projects, including trails and walking or

biking improvements. Communities and applicants are encouraged to reach out if support would help strengthen their applications.

## **5) Other Business**

J. Czysz introduced Lisa Wise, a new regional planner on the Environment Team.

P. Rasmussen shared that the Durham Planning Board reviewed a student-led sustainability project on nature-friendly lighting that helps residents and businesses choose lighting that balances safety with environmental impacts. Materials and a user guide will be shared publicly.

K. Pimental shared that the SRPC annual meeting will be held on June 25 at Oaks Golf Club in Somersworth, celebrating 55 years of regional planning. The event will feature the commissioners of NH DOT, DES, and BEA discussing the state's future direction and how regional planning can help municipalities meet broader goals. Organizers are also preparing exhibits highlighting major regional changes and projects over the past five decades.

Kean McDermott promoted Bike to Work Day and invited people to a "Bike From Work" event at the Dover Transportation Center at 4 p.m. He also announced a June 3 bike and e-bike safety event for elementary students in Milton.

## **6) Citizens Forum**

There were no citizen comments.

## **7) Adjourn**

M. Bobinsky moved to adjourn. With a Second by D. Manter. All members voted in favor. Motion passed. The meeting adjourned at 10:30 AM.

Respectfully submitted,

Megan Taylor-Fetter

# Strafford Regional Planning Commission

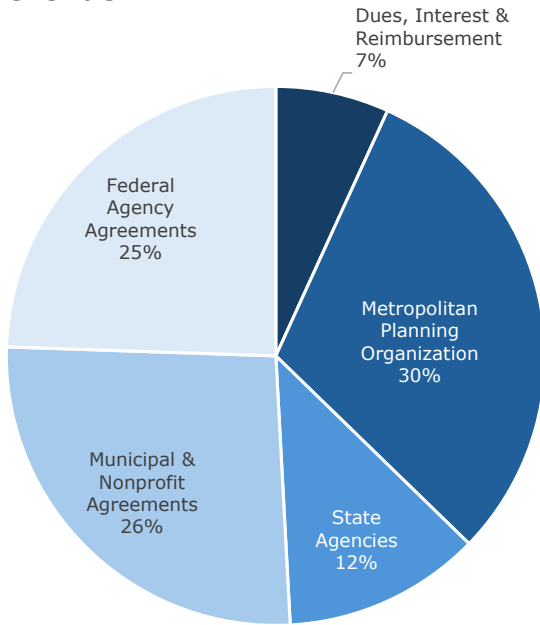
## FY 2027 Budget - Draft

### Summary Table

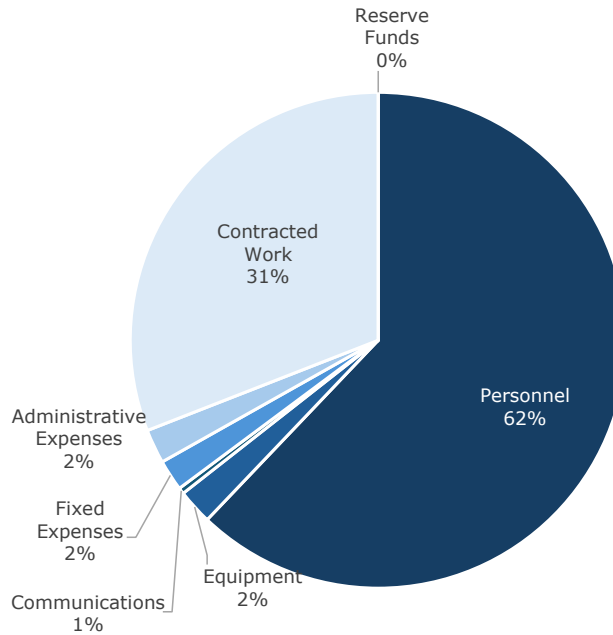
|                                    | FY26 Adopted*    | FY27 MidYear     |                 |
|------------------------------------|------------------|------------------|-----------------|
|                                    | Revenue          | Revenue          | Net Change      |
| Dues, Interest & Reimbursement     | 144,896          | 158,617          | 13,721          |
| Metropolitan Planning Organization | 634,359          | 710,000          | 75,641          |
| State Agencies                     | 270,203          | 276,765          | 6,562           |
| Municipal & Nonprofit Agreements   | 711,034          | 614,852          | (96,182)        |
| Federal Agency Agreements          | 668,450          | 570,200          | (98,250)        |
| <b>Total</b>                       | <b>2,428,942</b> | <b>2,330,434</b> | <b>(98,508)</b> |
|                                    | Expenses         | Expenses         | Net Change      |
| Personnel                          | 1,432,887        | 1,447,645        | 14,758          |
| Equipment                          | 73,445           | 53,418           | (20,027)        |
| Communications                     | 9,349            | 9,349            | 0               |
| Fixed Expenses                     | 41,837           | 47,246           | 5,409           |
| Administrative Expenses            | 52,000           | 52,000           | 0               |
| Contracted Work                    | 819,558          | 720,760          | (98,798)        |
| Reserve Funds                      | 0                | 0                | 0               |
| <b>Total</b>                       | <b>2,429,076</b> | <b>2,330,418</b> | <b>(98,658)</b> |
| <b>Net Deficit/Surplus</b>         | <b>42</b>        | <b>16</b>        | <b>150</b>      |

\*As adopted in February 2026

**Revenue**



**Expenses**



# Strafford Regional Planning Commission

| <b>FY2027 REVENUES</b>                                  | <b>FY 2027<br/>Adopted<br/>MidYear<br/>Revenue</b> | <b>FY27 DRAFT<br/>Program<br/>Revenue</b> | <b>FY27<br/>Dues<br/>Match</b> | <b>FY27 InKind<br/>Match</b> | <b>FY26<br/>Outside<br/>Cash Match</b> | <b>FY27 DRAFT<br/>Revenue</b> |            | <b>Net<br/>Change</b> | <b>% Change</b> |
|---|--|---|--------------------------------|------------------------------|--|-------------------------------|------------|-----------------------|-----------------|
| <b>Dues, Interest &amp; Reimbursements</b>              | <b>144,896</b>                                     | <b>158,617</b>                            | <b>0</b>                       | <b>0</b>                     | <b>0</b>                               | <b>158,617</b>                | <b>7%</b>  | <b>13,721</b>         | <b>9.5%</b>     |
| 2000 Municipal Dues                                     | 144,296  | 158,017                                   | 0                              | 0                            | 0                                      | 158,017                       |            | 13,721                | 9.5%            |
| 0000 Interest   | 100  | 100                                       | 0                              | 0                            | 0                                      | 100                           |            | 0                     | 0.0%            |
| 0000 Health Trust reward/reimbursement                  | 500  | 500                                       | 0                              | 0                            | 0                                      | 500                           |            | 0                     | 0.0%            |
| 0000 Misc Revenue                                       | 0  | 0   | 0                              | 0                            | 0                                      | 0                             |            | 0                     | -               |
| <b>Municipal &amp; Nonprofit Service Agreements</b>     | <b>711,034</b>                                     | <b>614,852</b>                            | <b>2,000</b>                   | <b>0</b>                     | <b>0</b>                               | <b>614,852</b>                | <b>26%</b> | <b>(96,182)</b>       | <b>-13.5%</b>   |
| 3305 Dover Transportation Master Plan                   |  | 23,000                                    | 0                              | 0                            | 0                                      | 23,000                        |            | 23,000                | -               |
| 3407 Durham Wagon Hill Living Shorelines Phase 2        | 2,000  | 15,000                                    | 0                              | 0                            | 0                                      | 15,000                        |            | 13,000                | 650.0%          |
| 3501 Farmington Town Planner Services                   | 75,000   | 80,000                                    | 0                              | 0                            | 0                                      | 80,000                        |            | 5,000                 | 6.7%            |
| 3506 Farmington Tax Maps                                | 2,150  | 1,500                                     | 0                              | 0                            | 0                                      | 1,500                         |            | (650)                 | -30.2%          |
| 3802 Middleton Zoning Ordinance Updates                 | 10,000   | 8,500                                     | 0                              | 0                            | 0                                      | 8,500                         |            | (1,500)               | -15.0%          |
| 3803 Middleton Asset Management Plan                    | 15,000   | 30,000                                    | 0                              | 0                            | 0                                      | 30,000                        |            | 15,000                | 100.0%          |
| 4104 Newmarket Tax Maps                                 | 1  | 1   | 0                              | 0                            | 0                                      | 1                             |            | 0                     | 0.0%            |
| 4106 Newmarket Comprehensive Master Plan Update         | 10,000   | 500                                       | 0                              | 0                            | 0                                      | 500                           |            | (9,500)               | -95.0%          |
| 4108 Newmarket Code Rewrite (HOP2.0)                    | 77,600   | 36,000                                    | 0                              | 0                            | 0                                      | 36,000                        |            | (41,600)              | -53.6%          |
| 4201 Northwood Technical Services                       | 34,600   | 34,600                                    | 0                              | 0                            | 0                                      | 34,600                        |            | 0                     | 0.0%            |
| 4301 Nottingham Town Planner Services                   | 30,000   | 30,000                                    | 0                              | 0                            | 0                                      | 30,000                        |            | 0                     | 0.0%            |
| 4304 Nottingham Housing Master Plan Chapter (HOP2.0)    | 12,000   | 5,000                                     | 0                              | 0                            | 0                                      | 5,000                         |            | (7,000)               | -58.3%          |
| 4606 Somersworth Tax Maps                               | 1  | 1,250                                     | 0                              | 0                            | 0                                      | 1,250                         |            | 1,249                 | 124900.0%       |
| 4607 Somersworth Zoning Reform (HOP2.0)                 | 68,000   | 24,000                                    | 0                              | 0                            | 0                                      | 24,000                        |            | (44,000)              | -64.7%          |
| 4609 Somersworth Economic Development Chapter           | 25,000   | 500                                       | 0                              | 0                            | 0                                      | 500                           |            | (24,500)              | -98.0%          |
| 4610 Somersworth Historic and Cultural Res MP Chap      | 20,000   | 250                                       | 0                              | 0                            | 0                                      | 250                           |            | (19,750)              | -98.8%          |
| 4611 Somersworth Master Plan Chapter TBD                |  | 25,000                                    | 0                              | 0                            | 0                                      | 25,000                        |            | 25,000                | -               |
| 4701 Strafford Town Planner Services                    | 38,000   | 38,000                                    | 0                              | 0                            | 0                                      | 38,000                        |            | 0                     | 0.0%            |
| 470x Strafford Tax Maps                                 | 1  | 1,250                                     | 0                              | 0                            | 0                                      | 1,250                         |            | 1,249                 | 124900.0%       |
| 4705 Strafford Bow Lake Watershed Management Plan       | 25,000   | 15,500                                    | 2,000                          | 0                            | 0                                      | 15,500                        |            | (9,500)               | -38.0%          |
| 4801 Wakefield Contract Planner                         | 7,500  | 7,500                                     | 0                              | 0                            | 0                                      | 7,500                         |            | 0                     | 0.0%            |
| 5002 NHARPC Administration                              | 8,000  | 8,000                                     | 0                              | 0                            | 0                                      | 8,000                         |            | 0                     | 0.0%            |
| 5123 Regional Plan Climate Action Addendum              | 12,000   | 17,000                                    | 0                              | 0                            | 0                                      | 17,000                        |            | 5,000                 | 41.7%           |
| 5124 GB2030 Installation of Watershed Signage II        | 0  | 38,500                                    | 0                              | 0                            | 0                                      | 38,500                        |            | 38,500                | -               |
| 5125 GB2030 Nutrient Reductions                         | 42,000   | 84,000                                    | 0                              | 0                            | 0                                      | 84,000                        |            | 42,000                | 100.0%          |
| 5126 GB2030 Investing Across Municipal Boundaries       | 10,000   | 89,000                                    | 0                              | 0                            | 0                                      | 89,000                        |            | 79,000                | 790.0%          |
| 5291 Zoning Atlas Outreach Pilot                        | 6,000  | 1,000                                     | 0                              | 0                            | 0                                      | 1,000                         |            | (5,000)               | -83.3%          |
| 5501 GIS projects (small billable projects)             | 1  | 1   | 0                              | 0                            | 0                                      | 1                             |            | 0                     | 0.0%            |
| <b>Federal Agency Agreements (including EDD)</b>        | <b>668,450</b>                                     | <b>570,000</b>                            | <b>35,000</b>                  | <b>35,000</b>                | <b>200</b>                             | <b>570,200</b>                | <b>24%</b> | <b>(98,250)</b>       | <b>-14.7%</b>   |
| <b>U.S. Dept of Economic Development Administration</b> |  |   |                                |                              |  |                               |            |                       |                 |
| 7004 EDD Planning Partnership                           | 70,000   | 70,000                                    | 35,000                         | 35,000                       | 0                                      | 70,000                        |            | 0                     | 0.0%            |
| <b>U.S. Environmental Protection Agency</b>             |  |   |                                |                              |  |                               |            |                       |                 |
| 7111 Brownfields Community Assessment (FY24-28)         | 153,000  | 206,000                                   | 0                              | 0                            | 0                                      | 206,000                       |            | 53,000                | 34.6%           |

# Strafford Regional Planning Commission

| <b>FY2027 REVENUES</b>                                  | <b>FY 2027<br/>Adopted<br/>MidYear<br/>Revenue</b> | <b>FY27 DRAFT<br/>Program<br/>Revenue</b> | <b>FY27<br/>Dues<br/>Match</b> | <b>FY27 InKind<br/>Match</b> | <b>FY26<br/>Outside<br/>Cash Match</b> | <b>FY27 DRAFT<br/>Revenue</b> |             | <b>Net<br/>Change</b> | <b>% Change</b> |
|---|--|---|--------------------------------|------------------------------|--|-------------------------------|-------------|-----------------------|-----------------|
| <b>U.S. Department of Housing and Urban Development</b> |  |   |                                |                              |  |                               |             |                       |                 |
| 7201 HUD EDI CDS - Regional Plans                       | 423,000  | 294,000                                   | 0                              | 0                            | 0                                      | 294,000                       |             | (129,000)             | -30.5%          |
| <b>State Agreements</b>                                 | <b>270,203</b>                                     | <b>273,300</b>                            | <b>5,000</b>                   | <b>12,500</b>                | <b>3,465</b>                           | <b>276,765</b>                | <i>12%</i>  | <b>6,562</b>          | <b>2.4%</b>     |
| <b>Dept of Environmental Services</b>                   |  |   |                                |                              |  |                               |             |                       |                 |
| 6107 Coastal Grant 2027                                 | 0  | 7,500                                     | 5,000                          | 2,500                        | 0                                      | 7,500                         |             |                       |                 |
| 6155 Coastal Watershed Resilience Plan                  | 1  | 30,000                                    | 0                              | 0                            | 0                                      | 30,000                        |             | 29,999                | 2999900%        |
| <i>615x Coastal Resilience Grant TBD</i>                |  | <i>15,000</i>                             | <i>0</i>                       | <i>0</i>                     | <i>0</i>                               | <i>15,000</i>                 |             | <i>15,000</i>         | <i>-</i>        |
| 6181 Phase II of NH Coastal Flood Risk Model            | 9,745  | 5,500                                     | 0                              | 0                            | 0                                      | 5,500                         |             | (4,245)               | -43.6%          |
| 6182 Coastal Watershed Stream Crossings                 | 7,882  | 30,000                                    | 0                              | 0                            | 0                                      | 30,000                        |             | 22,118                | 280.6%          |
| 6252 Cocheco River Management Plan                      | 23,287   | 10,000                                    | 0                              | 2,500                        | 0                                      | 10,000                        |             | (13,287)              | -57.1%          |
| 6253 Sunrise Lake Implementation (319)                  | 48,799   | 4,000                                     | 0                              | 0                            | 0                                      | 4,000                         |             | (44,799)              | -91.8%          |
| 6254 604(b) Bow Lake Watershed Management Plan          | 0  | 32,500                                    | 0                              | 0                            | 0                                      | 32,500                        |             | 32,500                | -               |
| 6307 Coastal Watershed Drinking & Flood Risk            | 1,000  | 56,000                                    | 0                              | 0                            | 0                                      | 56,000                        |             | 55,000                | 5500.0%         |
| <b>University of New Hampshire</b>                      |  |   |                                |                              |  |                               |             |                       |                 |
| 5211 PREPA Grant-Barrington Strengthening Regs          | 17,420   | 1,000                                     | 0                              | 0                            | 0                                      | 1,000                         |             | (16,420)              | -94.3%          |
| 5212 PREPA Grant-Nottingham Natural Resources Plan      | 28,465   | 1,200                                     | 0                              | 0                            | 3,465                                  | 4,665                         |             | (23,800)              | -83.6%          |
| 5213 PREPA Grant-Strafford Bow Lake Watershed Plan      | 25,000   | 2,500                                     | 0                              | 0                            | 0                                      | 2,500                         |             | (22,500)              | -90.0%          |
| <i>521x PREPA Grant(s)- TBD</i>                         |  | <i>25,000</i>                             | <i>0</i>                       | <i>0</i>                     | <i>0</i>                               | <i>25,000</i>                 |             | <i>25,000</i>         | <i>-</i>        |
| <b>NH Community Development Finance Authority</b>       |  |   |                                |                              |  |                               |             |                       |                 |
| 6604 CDBG Grant Administration (St. As Zoning Atlas Pil | 3,500  | 2,000                                     | 0                              | 0                            | 0                                      | 2,000                         |             | (1,500)               | -42.9%          |
| 6605 CDBG Grant Administration (Homeless Shelters)      | 29,400   | 7,500                                     | 0                              | 0                            | 0                                      | 7,500                         |             | (21,900)              | -74.5%          |
| 6606 CDFA Child Care Initiative                         |  | 17,000                                    | 0                              | 0                            | 0                                      | 17,000                        |             | 17,000                | -               |
| <b>Department of Safety Homeland Security</b>           |  |   |                                |                              |  |                               |             |                       |                 |
| 6507 HazMit Plans-Somersworth                           | 0  | 10,600                                    | 0                              | 2,500                        | 0                                      | 10,600                        |             | 10,600                | -               |
| 6508 HazMit Plans-Rollinsford                           | 0  | 8,000                                     | 0                              | 2,500                        | 0                                      | 8,000                         |             | 8,000                 | -               |
| 6509 HazMit Plans-New Durham                            | 0  | 8,000                                     | 0                              | 2,500                        | 0                                      | 8,000                         |             | 8,000                 | -               |
| <b>Metropolitan Planning Organization Agreements</b>    | <b>634,359</b>                                     | <b>710,000</b>                            | <b>78,889</b>                  | <b>0</b>                     | <b>0</b>                               | <b>710,000</b>                | <i>30%</i>  | <b>75,641</b>         | <b>11.9%</b>    |
| <b>Dept of Transportation</b>                           |  |   |                                |                              |  |                               |             |                       |                 |
| 8003 UPWP Federal Highways & Transit                    | 634,359  | 710,000                                   | 78,889                         | 0                            | 0                                      | 710,000                       |             | 75,641                | 11.9%           |
| <b>TOTAL REVENUE</b>                                    | <b>2,428,942</b>                                   | <b>2,326,769</b>                          | <b>120,889</b>                 | <b>47,500</b>                | <b>3,665</b>                           | <b>2,330,434</b>              | <b>100%</b> | <b>(98,508)</b>       | <b>-4.1%</b>    |

# Strafford Regional Planning Commission

## FY2027 Expenses

|  | FY2026 Adopted Mid |            | FY2027 DRAFT     |            | Net             |               |
|--|--------------------|------------|------------------|------------|-----------------|---------------|
|  | Year Budget        |            | Budget           |            | Change          | % Change      |
| <b>PERSONNEL</b>                       | <b>1,432,887</b>   | <b>59%</b> | <b>1,447,645</b> | <b>62%</b> | <b>14,758</b>   | <b>1.0%</b>   |
| Salaries and Hourly Wages              | 1,103,245          |            | 1,103,756        |            | 511             | 0.0%          |
| Payroll Taxes                          | 85,072             |            | 85,089           |            | 17              | 0.0%          |
| Payroll Processing - QuickBooks        | 4,000              |            | 4,000            |            | 0               | 0.0%          |
| Health Insurance                       | 147,220            |            | 161,647          |            | 14,427          | 9.8%          |
| Dental Insurance                       | 10,522             |            | 9,550            |            | (972)           | -9.2%         |
| Life Insurance                         | 1,262              |            | 1,227            |            | (34)            | -2.7%         |
| Shortterm Disability                   | 4,108              |            | 3,580            |            | (527)           | -12.8%        |
| Longterm Disability                    | 2,001              |            | 1,754            |            | (247)           | -12.3%        |
| Paid Family Medical Leave              | 6,914              |            | 7,371            |            | 458             | 6.6%          |
| FSA Fees                               | 1,672              |            | 1,672            |            | 0               | 0.0%          |
| Health Incentives                      | 8,807              |            | 8,513            |            | (294)           | -3.3%         |
| SIMPLE IRA Pension                     | 31,624             |            | 32,949           |            | 1,325           | 4.2%          |
| Worker's Compensation                  | 2,278              |            | 2,459            |            | 182             | 8.0%          |
| Unemployment Insurance                 | 3,117              |            | 3,030            |            | (87)            | -2.8%         |
| Staff Training & Workshops             | 16,000             |            | 16,000           |            | 0               | 0.0%          |
| Professional Dues                      | 5,047              |            | 5,047            |            | 0               | 0.0%          |
| <b>EQUIPMENT</b>                       | <b>73,445</b>      | <b>3%</b>  | <b>53,418</b>    | <b>2%</b>  | <b>(20,027)</b> | <b>-27.3%</b> |
| GIS Software                           | 6,015              |            | 6,015            |            | 0               | 0.0%          |
| Transportation Software and Databases  | 26,148             |            | 26,148           |            | 0               | 0.0%          |
| Office Software: Maintenance, purchase | 10,645             |            | 10,675           |            | 30              | 0.3%          |
| Traffic Count Supplies and Repair      | 14,030             |            | 2,130            |            | (11,900)        | -84.8%        |
| Equipment Rental and Repair            | 500                |            | 500              |            | 0               | 0.0%          |
| Copier Maintenance Contract            | 3,900              |            | 3,900            |            | 0               | 0.0%          |
| Computers and Peripherals              | 9,000              |            | 4,000            |            | (5,000)         | -55.6%        |
| Office Furniture                       | 3,207              |            | 50               |            | (3,157)         | -98.4%        |
| <b>COMMUNICATIONS</b>                  | <b>9,349</b>       | <b>0%</b>  | <b>9,349</b>     | <b>0%</b>  | <b>0</b>        | <b>0.0%</b>   |
| Postage and Delivery                   | 1,300              |            | 1,300            |            | 0               | 0.0%          |
| Internet and Phone Service             | 5,660              |            | 5,660            |            | 0               | 0.0%          |
| Website Design and Maintenance         | 1,389              |            | 1,389            |            | 0               | 0.0%          |
| Media Outreach Activities              | 1,000              |            | 1,000            |            | 0               | 0.0%          |
| <b>FIXED EXPENSES</b>                  | <b>41,837</b>      | <b>2%</b>  | <b>47,246</b>    | <b>2%</b>  | <b>5,409</b>    | <b>12.9%</b>  |
| Property & Liability                   | 10,837             |            | 16,246           |            | 5,409           | 49.9%         |
| Office Vehicle Lease and Maintenance   | 1,000              |            | 1,000            |            | 0               | 0.0%          |
| Rent                                   | 30,000             |            | 30,000           |            | 0               | 0.0%          |

# Strafford Regional Planning Commission

| FY2027 Expenses                                      | FY2026 Adopted Mid<br>Year Budget |             | FY2027 DRAFT<br>Budget |             | Net<br>Change   | % Change      |
|--|-----------------------------------|-------------|------------------------|-------------|-----------------|---------------|
| <b>ADMINISTRATIVE EXPENSES</b>                       | <b>52,000</b>                     | <b>2%</b>   | <b>52,000</b>          | <b>2%</b>   | <b>0</b>        | <b>0.0%</b>   |
| Printing   | 1,500                             |             | 1,500                  |             | 0               | 0.0%          |
| Audit and Accounting Services                        | 28,000                            |             | 28,000                 |             | 0               | 0.0%          |
| Legal  | 4,000                             |             | 4,000                  |             | 0               | 0.0%          |
| Office Supplies and Expenses                         | 6,000                             |             | 6,000                  |             | 0               | 0.0%          |
| Meeting Expenses (Meetings and Meeting Notices)      | 3,500                             |             | 3,500                  |             | 0               | 0.0%          |
| Travel   | 6,000                             |             | 6,000                  |             | 0               | 0.0%          |
| Library & Subscriptions: NH Planning Books           | 2,500                             |             | 2,500                  |             | 0               | 0.0%          |
| Bank Fees  | 0                                 |             | 0                      |             | 0               | -             |
| HealthTrust Employee Health Rewards                  | 500                               |             | 500                    |             | 0               | 0.0%          |
| <b>OUTSOURCED CONTRACTS</b>                          | <b>819,558</b>                    | <b>34%</b>  | <b>720,760</b>         | <b>31%</b>  | <b>(98,798)</b> | <b>-12.1%</b> |
| 1000 IT Services                                     | 18,000                            |             | 18,000                 |             | 0               | 0.0%          |
| 3503 Durham WHF Signs Fabrication                    | 0                                 |             | 7,145                  |             | 7,145           | -             |
| 3903 Milton Nitrogen Removal Plan Engineer           | 23,722                            |             | 0                      |             | (23,722)        | -100.0%       |
| 4108 Newmarket Form Based Code Consultant            | 68,500                            |             | 20,500                 |             | (48,000)        | -70.1%        |
| 4607 Somersworth Zoning Reform (HOP2.0)              | 12,000                            |             | 12,000                 |             | 0               | 0.0%          |
| 4705 Strafford Bow Lake Watershed Management Plan    | 21,500                            |             | 15,000                 |             | (6,500)         | -30.2%        |
| 5121 GB2030 Milton Three Ponds Watershed Plan Engi   | 25,182                            |             | 0                      |             | (25,182)        | -100.0%       |
| 5122 GB2030 Signage - Contract Planner               | 12,080                            |             | 0                      |             | (12,080)        | -100.0%       |
| 5122/4 GB2030 Signage - Sign Manufacturer            | 9,000                             |             | 14,500                 |             | 5,500           | 61.1%         |
| 5122 GB2030 Signage - UNH                            | 5,844                             |             | 0                      |             | (5,844)         | -100.0%       |
| 5122/4 GB2030 Signage - Graphic Designer             | 3,680                             |             | 2,000                  |             | (1,680)         | -45.7%        |
| 5124 GB2030 Signage - Rockingham Planning Commission |                                   |             | 8,360                  |             | 8,360           | -             |
| 5125 GB2030 Nutrient Reductions Trainer              | 26,500                            |             | 1,700                  |             | (24,800)        | -93.6%        |
| 5126 GB2030 Investing Across Municipal Boundaries    | 4,500                             |             | 43,155                 |             | 38,655          | 859.0%        |
| 5212 PREPA Grant-Nottingham GIS/Engineering          | 8,200                             |             | 0                      |             | (8,200)         | -100.0%       |
| 6252 Cocheco Riv Mgt Plan - NH Indigenous Communit   | 4,000                             |             | 2,000                  |             | (2,000)         | -50.0%        |
| 6253 Sunrise Lake 319 Engineer                       | 26,725                            |             | 0                      |             | (26,725)        | -100.0%       |
| 6253 Sunrise Lake Construction Materials             | 13,525                            |             | 0                      |             | (13,525)        | -100.0%       |
| 625x 604(b) Bow Lake Watershed Management Plan       |                                   |             | 29,000                 |             | 29,000          | -             |
| 7111 EPA Brownfields QEP                             | 143,000                           |             | 195,000                |             | 52,000          | 36.4%         |
| 7201 HUD EDI CDS Regional Plans - RPC Pass Through   | 342,000                           |             | 252,400                |             | (89,600)        | -26.2%        |
| 7301 USDA RD FAR & MIL Town Facilities Consultant    | 1,600                             |             | 0                      |             | (1,600)         | -100.0%       |
| 8003 Contract Transportation Support (UPWP)          | 50,000                            |             | 100,000                |             | 50,000          | 100.0%        |
| <b>RESERVE FUND CONTRIBUTION</b>                     | <b>0</b>                          | <b>0%</b>   | <b>0</b>               | <b>0%</b>   | <b>0</b>        | <b>0.0%</b>   |
| <b>TOTAL EXPENSES</b>                                | <b>2,429,076</b>                  | <b>100%</b> | <b>2,330,418</b>       | <b>100%</b> | <b>(98,658)</b> | <b>-4.1%</b>  |

# STRAFFORD

Regional Planning Commission

**DATE:** June 12, 2026

**TO:** SRPC Commissioners

**FROM:** Megan Taylor-Fetter, Office Coordinator

**RE:** Election of Officers and Executive Committee for FY 2027

Under the bylaws there are 3 officers: Chair, Vice Chair, and Secretary-Treasurer. The Executive Committee consists of the 3 officers, 4 members elected by Commission, and any alternates.

The Slate Officers and Executive Committee Membership for FY2027 is:

| Commissioner     | Current Office | Proposed Office | Community   | Commission Term |
|------------------|----------------|-----------------|-------------|-----------------|
| Paul Rasmussen   | Chair          | Chair           | Durham      | 04/30/2029      |
| Michael Lehrman  | Vice-Chair     | Vice-Chair      | Durham      | 04/30/2030      |
| Joe Boudreau     | Treasurer      | Treasurer       | Rochester   | 06/30/2026      |
| Michael Bobinsky | Member         | Member          | Somersworth | 05/02/2028      |
| Mark Richardson  | Member         | Member          | Somersworth | 05/31/2029      |
| Matt Towne       | Member         | Member          | Barrington  | 07/09/2027      |
| Steve Stancel    | Member         | Member          | Wakefield   | 08/01/2026      |
| Katrin Kasper    | Alternate      | Alternate       | Lee         | 11/21/2028      |
| Krysta Gingue    |                | Alternate       | Dover       | 11/04/2027      |
| Curtis Register  |                | Alternate       | Durham      | 04/30/2027      |

Nominations for Officers and Executive Committee members will also be entertained at the Commission Meeting on Jun. 19. If you have any questions or comments, please feel free to contact Jen Czysz, AICP, Executive Director, at 603-994-3500 x100 or [jczysz@straffordrpcnh.gov](mailto:jczysz@straffordrpcnh.gov)

## STRAFFORD REGIONAL PLANNING COMMISSION

150 Wakefield Street, Suite 12, Rochester, NH 03867

Barrington | Brookfield | Dover | Durham | Farmington | Lee | Madbury | Middleton | Milton | New Durham  
Newmarket | Northwood | Nottingham | Rochester | Rollinsford | Somersworth | Strafford | Wakefield



## SRPC Commission Meeting Schedule

Commissioners and transportation partners meet monthly to govern our three programs as well as quarterly to engage in peer learning opportunities for each:

- **RPC:** Regional Planning Commission (Commissioners)
- **EDD:** Economic Development District Board of Directors (Commissioners)
- **MPO:** Metropolitan Planning Organization's Transportation Policy Committee (Commissioners + Partners)

**Monthly Meetings:** 3<sup>rd</sup> Friday of the month, 9-10:30 AM, SRPC Office, Conf. Room 1A

**Quarterly Field Trips:** Thursdays, 3:45-5:30 PM, in Sept., Dec., Feb., and Jun.

### Fiscal Year 2027 Schedule

| Date                | Time         | Location        | Program* |
|---------------------|--------------|-----------------|----------|
| Fri. Jul. 17, 2026  | 9-10:30 AM   | SRPC            | RPC      |
| Fri. Aug. 21, 2026  | 9-10:30 AM   | SRPC            | EDD/MPO  |
| Fri. Sep. 18, 2026  | 9-10:30 AM   | SRPC            | MPO      |
| Thur. Sep. 24, 2026 | 3:45-5:30 PM | Field Trip      | RPC      |
| Fri. Oct. 16, 2026  | 9-10:30 AM   | SRPC            | RPC      |
| Fri. Nov. 20, 2026  | 9-10:30 AM   | SRPC            | EDD      |
| Thur. Dec. 10, 2026 | 3:45-5:30 PM | Field Trip      | MPO      |
| Fri. Dec. 18, 2026  | 9-10:30 AM   | SRPC            | MPO      |
| Fri. Jan. 15, 2027  | 9-10:30 AM   | SRPC            | RPC      |
| Fri. Feb. 19, 2027  | 9-10:30 AM   | SRPC            | EDD      |
| Thur. Feb. 25, 2027 | 3:45-5:30 PM | Field Trip      | EDD      |
| Fri. Mar. 19, 2027  | 9-10:30 AM   | SRPC            | MPO      |
| Fri. Apr. 16, 2027  | 9-10:30 AM   | SRPC            | RPC      |
| Fri. May 21, 2027   | 9-10:30 AM   | SRPC            | MPO      |
| Fri. Jun. 18, 2027  | 9-10:30 AM   | SRPC            | RPC/EDD  |
| Thu. June 24, 2027  | 11 AM – 2 PM | Annual Luncheon | All      |

\* Tentative line up of SRPC programs, subject to change. One or more program areas may partner for a single meeting.

### STRAFFORD REGIONAL PLANNING COMMISSION

150 Wakefield Street, Suite 12, Rochester, New Hampshire 03867

Barrington | Brookfield | Dover | Durham | Farmington | Lee | Madbury | Middleton | Milton | New Durham  
Newmarket | Northwood | Nottingham | Rochester | Rollinsford | Somersworth | Strafford | Wakefield

